



The  
**Property  
Selling**  
company™

Tel 0800 111 4118

Email [hello@thepropertysellingcompany.co.uk](mailto:hello@thepropertysellingcompany.co.uk)

Web [www.thepropertysellingcompany.co.uk](http://www.thepropertysellingcompany.co.uk)



## 9 Kemp Road, Leicester, LE3 9PT Offers over £157,500

Welcome to Kemp Road, Leicester - a charming location that could be the perfect setting for your new home! This delightful 3 bedroom end of terrace boasts a spacious 947 sq ft of living space, offering you 1 reception room, 3 bedrooms, and 1 bathroom - providing ample space for all your needs.

Built in 1947, this property exudes character and history, making it a unique find in the heart of Leicester. The 3 bedrooms offer versatility, whether you need a home office, guest room, or simply extra space for your family.

Situated in a popular location, you'll find yourself surrounded by all the amenities you could desire, from shops to restaurants, and everything in between. The council tax band A ensures that you'll have affordable living costs, allowing you to enjoy the benefits of this fantastic property without breaking the bank.

One of the standout features of this house is the ample outside space it offers. Whether you have a green thumb and dream of creating a beautiful garden oasis, or simply want a space to enjoy the fresh air, this property provides you with the opportunity to make the most of outdoor living.

Don't miss out on the chance to make this property your own - with its ideal location, spacious layout, and charming character, it's a property that has the potential to become your perfect home. Contact us today to arrange a viewing and take the first step towards making Kemp Road your new address.


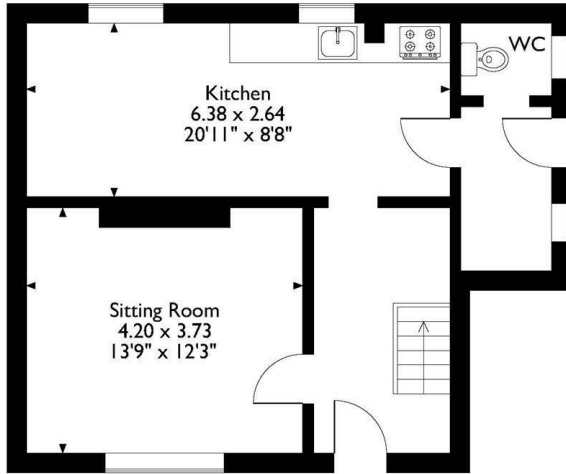




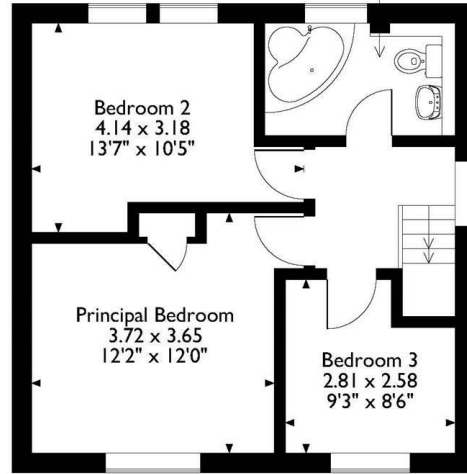
# Kemp Road, Leicester

## Approximate Gross Internal Area 90 Sq M/969 Sq Ft

Bathroom  
2.89 x 1.71  
9'6" x 5'7"

**Ground Floor**



**First Floor**

Please note that the location of doors, windows and other items are approximate and this floorplan is to be used for illustrative purposes only. Unauthorized reproduction is prohibited.

