



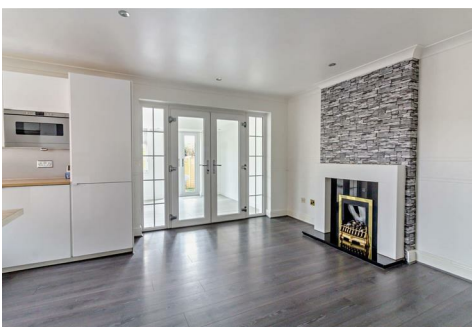
The  
**Property  
Selling**  
company™

---

Tel 0800 111 4118

Email [hello@thepropertysellingcompany.co.uk](mailto:hello@thepropertysellingcompany.co.uk)

Web [www.thepropertysellingcompany.co.uk](http://www.thepropertysellingcompany.co.uk)



**2 Royston Close, Sheffield, S20 6SH**

**Offers over £215,000**

An internal inspection is essential to appreciate the standard of accommodation on offer in this excellent property that has been finished to a high standard. The property is situated in a popular residential location close to all local amenities. Enclosed garden, parking.

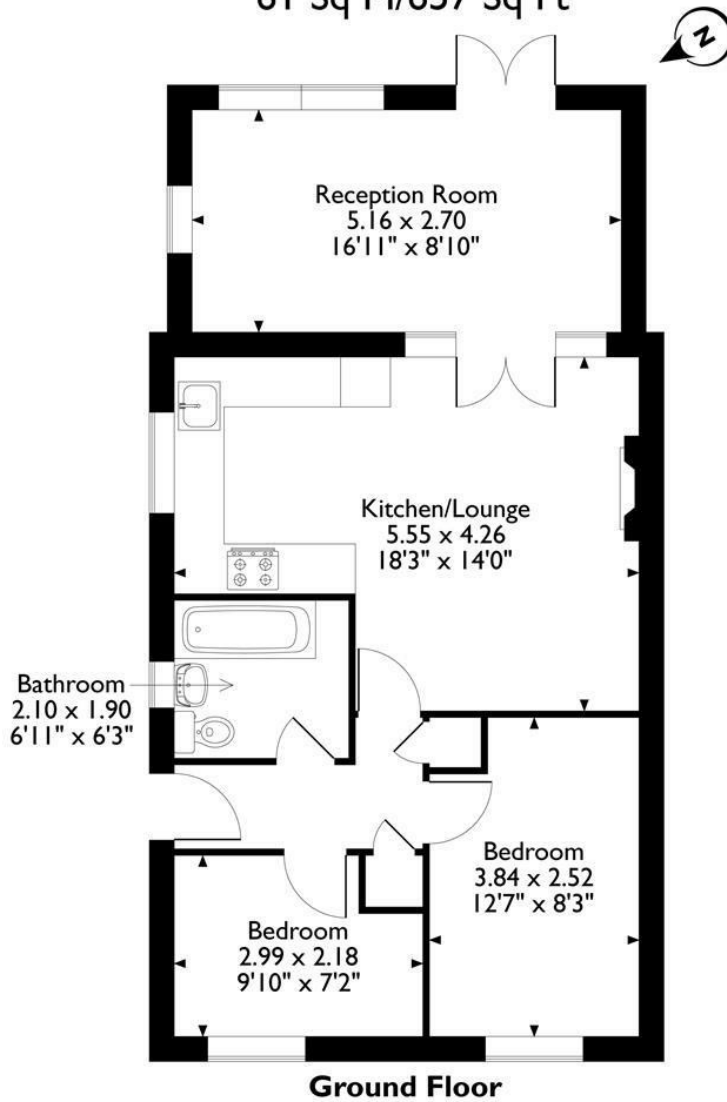
This property is perfect for all, families, first time buyers or a great investment.

Call the office today to see how lovely this home could be for you!!

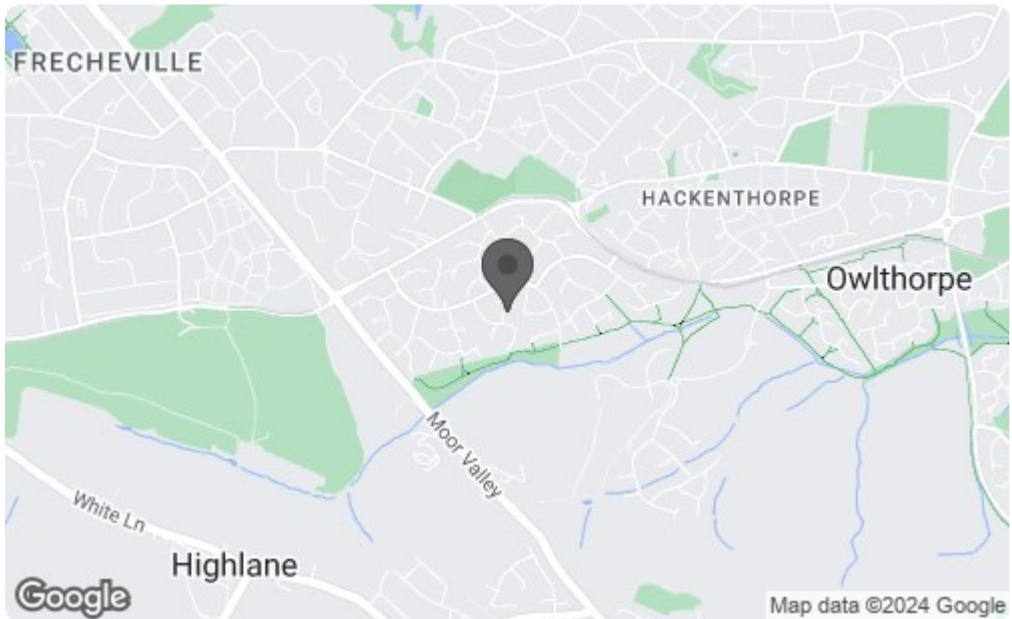


# Royston Close, Owlthorpe, Sheffield

## Approximate Gross Internal Area 61 Sq M/657 Sq Ft



Please note that the location of doors, windows and other items are approximate and this floorplan is to be used for illustrative purposes only. Unauthorized reproduction is prohibited.



Energy Efficiency Rating		
	Current	Potential
Very energy efficient - lower running costs		
(92 plus) <b>A</b>		
(81-91) <b>B</b>		
(69-80) <b>C</b>		
(55-68) <b>D</b>		
(39-54) <b>E</b>		
(21-38) <b>F</b>		
(1-20) <b>G</b>		
Not energy efficient - higher running costs		
<b>England &amp; Wales</b> <small>EU Directive 2002/91/EC</small>		
Environmental Impact (CO <sub>2</sub> ) Rating		
	Current	Potential
Very environmentally friendly - lower CO <sub>2</sub> emissions		
(92 plus) <b>A</b>		
(81-91) <b>B</b>		
(69-80) <b>C</b>		
(55-68) <b>D</b>		
(39-54) <b>E</b>		
(21-38) <b>F</b>		
(1-20) <b>G</b>		
Not environmentally friendly - higher CO <sub>2</sub> emissions		
<b>England &amp; Wales</b> <small>EU Directive 2002/91/EC</small>		

